



# CLOUD

## Citizens of Lancaster Opposed to Unnecessary Development

### **What's this all about?**

As we're probably all aware by now, Lancaster City Council have drafted a new local development plan and carried out public consultations on it at the start of this year. Public drop-in sessions were held at various locations such as Ellel village hall and the Lancaster House Hotel and you may have attended one of these.

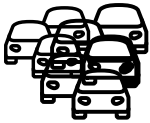
One of the key features of this plan is the proposal to create a garden village at Bailrigg with 3,500- 5,000 houses. It would cover a large area of land from Whinney Carr on the southern edge of Scotforth almost to Galgate on the west side of the railway line. It would involve extensive new road links to provide access under and over the railway and to connect to the M6.

Residents across south Lancaster have come together to oppose the Bailrigg garden village. This Newsbrief reports our progress so far and sets out what we need to do next. We invite all Lancaster residents to join our campaign - we need your support if we are to be successful!

Local residents in Galgate, Bailrigg and Scotforth submitted a wide range of objections to the Council about the Bailrigg garden village.



Lancaster doesn't need this many new houses - more and better quality jobs are more important.



The garden village would seriously increase traffic congestion on the A6 between Bailrigg and the city centre, including the Pointer roundabout.



Poor air quality and particulate pollution from road congestion on A6 and in city centre.



High infrastructure costs, taking finance away from other regeneration and job creation projects, in the Lancaster area.



Additional pressure on schools, hospital, fire, police, ambulance and other public services all already subject to cuts.



Flood risk, especially to Galgate.



Loss of amenities, natural and historical environment.

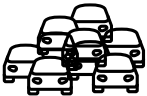
Residents groups have been formed in Galgate, Burrow and Scotforth, with Galgate Community Action Group on Facebook now having 257 members. We drew up a petition which was signed by nearly 400 residents from Galgate, Bailrigg and Burrow and presented it to a meeting of Lancaster City Council in April. Councils are obliged to debate petitions with this high number of signatures, but for legal reasons the Council decided to defer this debate until December 2017, when the draft local plan is due to be debated. In the meantime our thanks to those who organised the petition, to everyone who went around knocking on doors to collect signatures for it and to everyone who signed - you've already made a real difference by bringing our objections to the attention of the whole city Council.

# WHAT DOES THIS MEAN FOR LANCASTER?

CLOUD



**Number of houses** : To put the size of the proposed garden village in context, Galgate contains just 1200 houses, but Bailrigg garden village is planned to have at least 3500 and possibly as many as **5000** houses!



**Houses and Congestion** : Traffic from Bailrigg garden village would affect both the A6 and Ashton Road leading to major congestion at the Pointer Roundabout making existing problems worse. Residents from Bowerham, Primrose, Scotforth, Moorlands, Ashton Road Stodday and Glasson Dock would all be affected and just imagine the rat runs and disruption it would cause.



**Air Quality** There will be further deterioration of air quality and particulate pollution from stationary and slow moving traffic along the A6 Scotforth Road, Greaves Road and through the inadequate city centre road network.



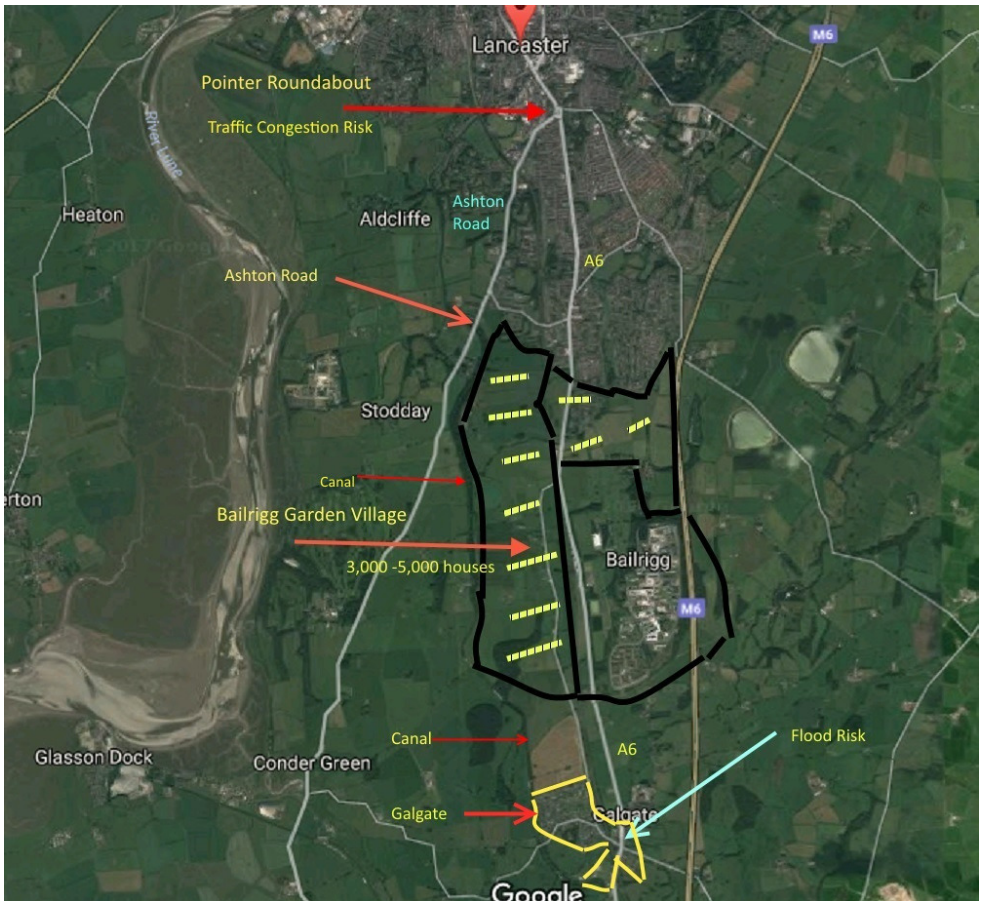
**Flood Risk** : This comes from hard standing run off from additional houses and road infrastructure as a result of the garden village.



**Loss of amenity** : The destruction of the natural and historic environment between Lancaster and Galgate. Increased pressure on the Lancaster canal which is already a fragile, but an essential wildlife corridor. Loss of amenities.

# THE MAP TELLS THE STORY

CLOUD



# OUR CAMPAIGN: GET INVOLVED! CLOUD

Our campaign and how you can help - get involved!

The Galgate residents group has already met on several occasions, most recently on 6th June 2017, when residents from Scotforth and some city councillors also attended. At this meeting we decided to adopt a new name for our campaign against Bailrigg garden village - CLOUD which stands for

Citizens of Lancaster Opposed to Unnecessary Development.

## NEXT STEPS FOR OUR CAMPAIGN

1. Grow the number of CLOUD supporters - the more supporters we have, the greater our influence will be.
2. Find as much information as we can (for example on the flooding risk and forecasts of housing demand) to support our objections to the garden village.
3. Start to prepare our case for the Planning Inspector in 2018.
4. Participate with the City Council in the garden village planning process so we are aware of what is going on - but without prejudicing our opposition to it.
5. Raise funds to finance our activities, such as the production of this newsbrief and much more.
6. Raise awareness across Lancaster that Bailrigg garden village has implications across the whole Lancaster City Council Area.

**From now to December 2017** - the draft local plan will be developed by the City Council and additional information provided, including more details about Bailrigg garden village.

**December 2017** - Lancaster City Council is expected to debate the local plan and the petition we submitted in April.

**2018** - A Planning Inspector will be appointed by the government to consider the local plan and objections to it. This will provide us with an important opportunity to present our objections to the garden village.

**2019** - Final decision on the local plan, including Bailrigg garden village.

Thank you for taking the time to read this leaflet. If you believe Bailrigg garden village is unnecessary and unwelcome and not what is needed for the future prosperity of Lancaster join our campaign. Come to future meetings and help us with the campaign.

# HOW TO GET INVOLVED

CLOUD

You can join our **Facebook group** - show your support and hear about forthcoming meetings and actions:

[https://www.facebook.com/groups/GalgateCAG/-](https://www.facebook.com/groups/GalgateCAG/)

If you would like an eNewsletter to stay up to date with the campaign send your name and email address to :

[cloudbgv2017@gmail.com](mailto:cloudbgv2017@gmail.com)

If you're not on email or Facebook we will be sending out paper Newsletters. If you want to be sure of receiving notice of future meetings, could you liaise with a neighbour who is on email?

We welcome support from all Lancaster residents. Just by joining CLOUD you add weight to the campaign against Bailrigg garden village. If you can assist in other ways, that's even better. We are looking for people to help with :

**EMAIL US AT : [cloudbgv2017@gmail.com](mailto:cloudbgv2017@gmail.com)**

1. Fund raising and crowd funding.
2. Expertise in local planning matters.
3. Note takers for meetings.
4. Leaflet distribution.
5. Participating in meetings with Lancaster city planners to develop the local plan.
6. Speakers for the public hearings in 2018.
7. Please let us know if you'd like to help with any of these activities.